



Quality by Witzemann

**WITZENMANN**

managing flexibility

# COMPANY PROFILE

## **Witzemann GmbH**

Östliche Karl-Friedrich-Str. 134  
75175 Pforzheim, Germany  
Phone +49 7231 581 - 0  
Fax +49 7231 581 - 820  
E-mail: [wi@witzemann.com](mailto:wi@witzemann.com)  
[www.witzemann.com](http://www.witzemann.com)

0100uk/11/03/16/5



# WE MAKE HISTORY

Traditional company – worldwide leader

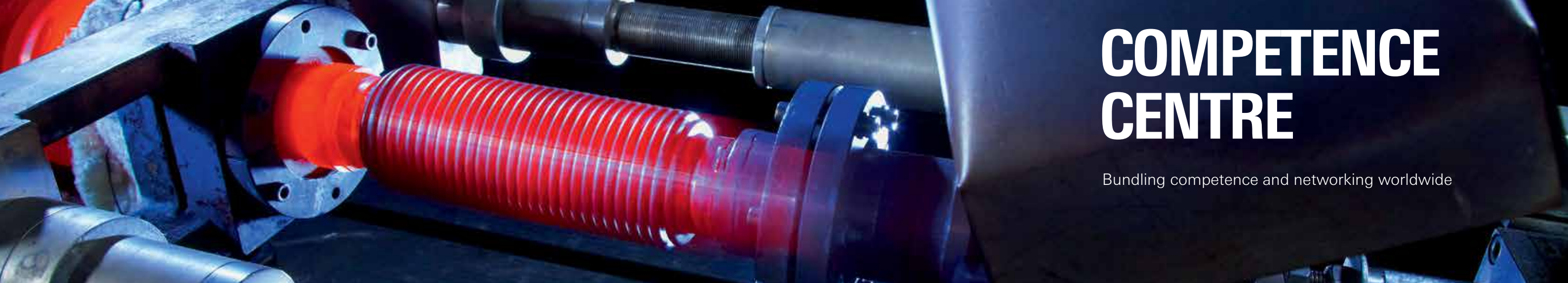


In 1885, Heinrich Witzenmann founded the metal hose and expansion joint industry with the invention of the flexible metal hose. Up to today, the Witzenmann Group has been shaping this industry with their technology and innovations. The Witzenmann Group is thus developing into a worldwide leading manufacturer of flexible metallic elements with a turnover of about € 580 million.

Proprietors:  
The Witzenmann Family

General Management:  
Dr. Hans-Eberhard Koch  
Dr. Gerhard Flöck  
Dr. Andreas Kämpfe  
Philip Paschen

Supervisory Board:  
Prof. Dr. Herbert Paschen, Heidelberg (Chairman)  
Dr. Jakob von Trotha, Gif-sur-Yvette (Vice Chairman)  
Dr. Sigvard Clasen, Pforzheim  
Dr. Siegfried Goll, Markdorf  
Andreas Meiniger, Pforzheim  
Cornelia Ast, Pforzheim



# COMPETENCE CENTRE

Bundling competence and networking worldwide

The Pforzheim headquarters is the competence centre of the Group and coordinates the worldwide activities. Here, more than 1,650 employees work

in Production, Quality Management, Research and Development, and many other departments and functions.

They all contribute to Witzemann's development of innovative products and solutions. The largest testing facility in the industry and qualified, motivated

employees guarantee the high Witzemann quality, recognised worldwide.

# OUR FLEXIBLE NETWORK



International engineering,  
local production all over the world

With 24 companies, the Witzenmann Group is represented worldwide in 19 countries. More than 4,000 employees make sure that our company motto, "Managing Flexibility," stands for technologically leading product solutions in all kinds of branches. With the Pforzheim headquarters as the hub, our

subsidiaries form a global network. The combination of a global focus and local presence means that we have an optimum proximity to our customers. In this way, Witzenmann technology and quality are always available wherever they are needed.



The qualification and motivation of our employees are our most important resources. Witzenmann Academy offers a qualified programme for further education and training adapted to the various positions in production or sales, starting with trainees in their first year of their apprenticeships to the managers. The

**WITZENMANN**  
*Academy*

special High Potentials programme promotes young, highly talented employees to qualify them best for tasks within the Group. The new in-house child care centre makes it easier for mothers and fathers in our company to better combine everyday work, child care, and family life.

# FUTURE- ORIENTED

Witzenmann – innovative, even for its employees



# SUSTAINABILITY

Corporate social responsibility

Witzenmann rises to its social responsibility and meets the economical, social, and ecological challenges with networked, holistic dedication that goes beyond purely economical action and the legal scope. With the signing of the Declaration of Accession, we

acknowledge the 10 principles of the United Nations Global Compact, an initiative for the worldwide strengthening of human rights, acceptable working conditions, environmental protection, and the fight against corruption.



# RESEARCH AND DEVELOPMENT

Witzenmann – the technology leader

In the area of flexible metal elements, Witzenmann is the technology leader and preferred development partner of the leading companies on the world market. Our extensive pool of engineers lets us develop and produce optimised product solutions. Witzenmann specialists accompany product develop-

ment from prototype construction and extensive test series to production. We have packed this engineering know-how into our user-friendly design software. Intuitive to use and universally applicable, it provides support in the selection and design of metal hoses, expansion joints, and pipe supports.







# MORE THAN A PROMISE

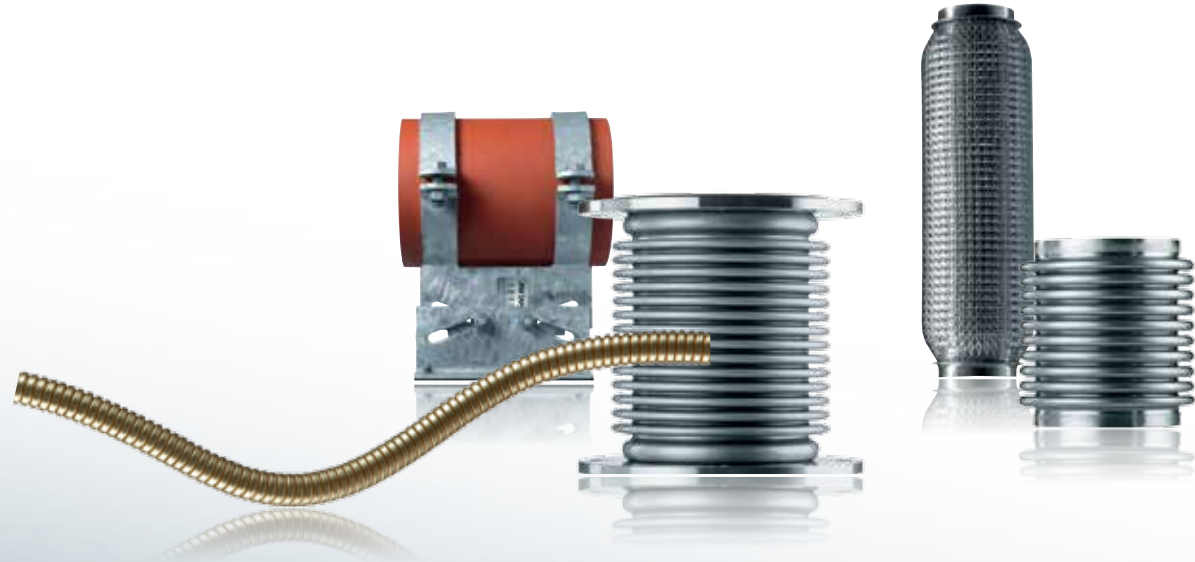
Witzenmann – the service and quality leader

With our locations around the globe, we offer market-leading engineering, exemplary service, and a manufacturing quality that meets the high standards of “Made in Germany” in the direct vicinity of our customers. Comprehensive, customised technical consultation, manufacturing, packaging, and personal care in design, installation, or commissioning make

Witzenmann the preferred partner in all kinds of industries and guarantee “Quality by Witzenmann.” From this aspect arises the Group's responsibility to take part in the most important international committees, expert groups, certification bodies, and research associations and help shape industrial standards.







# MANAGING FLEXIBILITY

Witzenmann – wide know-how for precise solutions

Witzenmann has the world's largest product range of flexible metallic elements for industry. Our standard series and customised special solutions represent our leading know-how in engineering and production. We offer the optimum solution when it comes to decoupling vibrations or compensating

movements in pipe systems. Patented technology for industry and plant engineering and construction, the automotive industry and commercial vehicles, motor construction, aerospace technologies, and technical building equipment.

# AUTOMOTIVE TECHNOLOGY

Precision in mass production



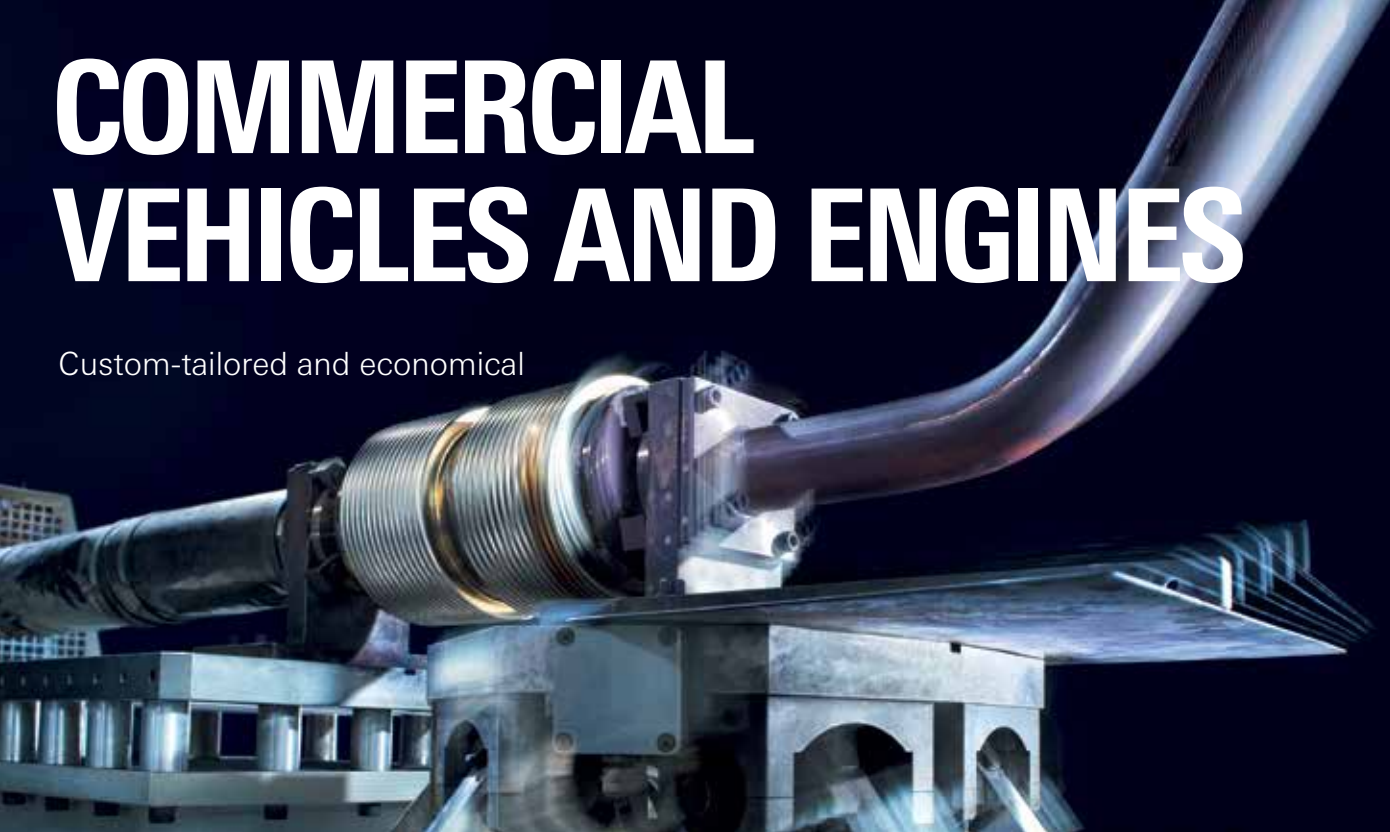
Fuel efficiency, a gain in comfort, and a robust, long service life are attributes to which Witzemann products contribute in automotive engineering. Components for noise and vibration decoupling reduce noise emissions and decouple the exhaust gas systems from the motor vibrations. Flexible



return pipes for oil and exhaust gas reduce pollutant emissions and fuel consumption. With an inside diameter of only 3 mm, our precision bellows is one of the central components of a modern, efficient motor control with piezo injection.

# COMMERCIAL VEHICLES AND ENGINES

Custom-tailored and economical



Like the automotive industry, the manufacturers of utility vehicles and large motors, ship drives, and special vehicles rely on Witzemann's know-how. Decoupling elements, exhaust gas and oil return pipes, ducts and winding tubes, and complete pipe systems

are developed and produced according to customer specification. Designed for an intensive constant use under extreme operating conditions in terms of dimensions and durability, they permit the fulfilment of strict exhaust gas and environmental standards.





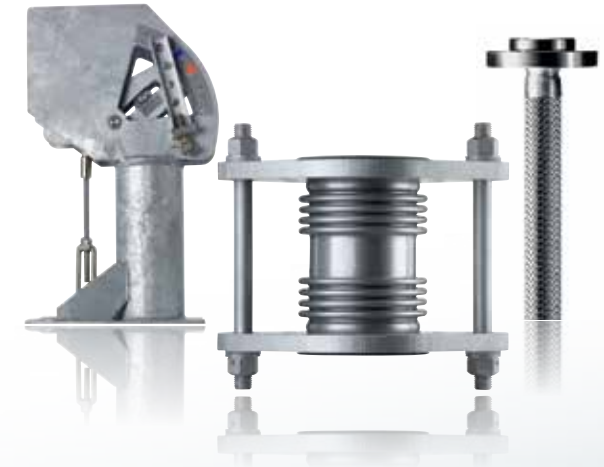


# INDUSTRY

Long-lived and reliable

In industry and plant engineering and construction, Witzenmann complete solutions stand for safe, economical operation. Industry-wide, we offer the widest programme of expansion joints and pipe supports for plant engineering and construction.

HYDRA



Our hangers, supports, and bearings are used for the reliable mounting of pipe systems. Expansion joints take up movements or decouple system vibrations and structure-borne noise.



# TECHNICAL BUILDING EQUIPMENT

Versatile and needs-based

Even in technical building equipment, the flexible, mounting-friendly elements of Witzemann set standards. The sprinkler mounting system offers a complete, economical solution for building fire protection. Exhaust gas and ventilation ducts provide

a needs-based supply air and exhaust air regulation in residential and commercial buildings. Flexible metal hoses and expansion joints enable the perfect operation of systems for regenerative energy use or in heating and air-conditioning technology.





# AEROSPACE

High-tech under extreme conditions



The components used in the aerospace industry must meet the highest requirements on functional safety despite extreme environmental conditions in the process. Flexible lines for the deicing of airplanes, anti-vibration systems in helicopters, cryogenic supply lines in rocket engines, and flexible components

for cooling and pneumatic systems in the European space laboratory Columbus – in all these areas, the solutions of Witzenmann support future-looking, state-of-the-art technology and are "on board" high-profile projects.